

The Delphian

February 13, 2023

The Voice of the Students

Volume 78, Issue 7

Students Study in India With Bhisé Global Learning Experience

BY MALIKA BURIEVA

In October 2022, Adelphi University's Levermore Global Scholars (LGS) Program unveiled the Bhisé Global Learning Experience in India 2023 Program. This intensive yet immersive 10-day study tour to India was established and sponsored by Adelphi alumni Bharat Bhisé, MBA '78, CEO and founder of Bravia Capital. The program occurred in January 2023 Intersession, where eight LGS students of various majors were selected. It catered toward their majors and research projects that will be presented during the Scholarship and Creative Works Conference on April 25, 2023. The group analyzed the country's global function through the arts, women's empowerment, business, politics, the environment and health and wellness while visiting three of India's major cities: New Delhi, Goa and Mumbai.

For me, a junior communications major, experiencing India was almost indescribable. It was the first country in Asia that I had visited. Each city had its own culture and diversity that I was pleasantly surprised to see. The itinerary provided to us consisted of a myriad of activities. We visited multiple schools, bazaars, lectures, research centers and concerts. The day that stood out to me the most was taking a trip to Agra, India to visit the Taj Mahal. It was a privilege to experience one of the wonders of the world. I did not expect cultural similarities between India and my own. My family is from Uzbekistan, a country in Central Asia that birthed the Mughul Empire. The empire spread to North India, bringing its language, architecture and culture. The

cultural similarities were what drew me to apply to this program. I have grown up watching Indian cinema, known as "Bollywood." Through the multitude of Bollywood movies, I was introduced to Indian culture. Since childhood, I have always wanted to visit India. I knew that I had to apply once the program became official.

The Bhisé Global Learning Program in India is a study-abroad experience I will cherish forever. As a child, a visit to

matured, I became aware of such. I knew that I would be more appreciative of my upbringing coming back from India. I had the privilege of visiting such a country of rich culture through a praiseworthy study-abroad opportunity. I am thankful for what I had growing up as a first-generation American. My upbringing and how I see the world will directly impact my future career choices in journalism. In terms of volunteer decisions, I would like to give



The Bhisé group in Goa, India. From left: Callum Ferguson, Amanda Franstedt, Caio Gomes, Professor Rakesh Gupta, Christina Korotki, Malika Burieva, Valentin LeGoupil-Maier, Erica Criollo, Tiffany Pacheco and Professor Katie Laatikainen.

India was simply an imagination. I never thought that it would come true. However, I was aware of my privileges when visiting. My parents are immigrants, so they gave me a life they never had. While I

back to those who never had an ounce of an upbringing like mine. This study tour solidified my future choices career-wise.

The first study tour to India through

Continued on page 2

University's Foreign Language Requirement for Only Four Programs Explained

BY LILYEN MCCARTHY

At Adelphi, all Bachelor's of Arts (BA), STEP, Honors and Levermore Global Scholars (LGS) students are required to master a foreign language up to a Level IV proficiency to fulfill the language requirement. Hundreds of students enroll in one of the languages offered each semester. According to Dr. Tandra Chakraborty, interim associate dean for Student Success and Strategic Initiatives in the College of Arts and Sciences, of the enrolled, 56 percent take Spanish, 8 percent are in French, 5 percent in Mandarin, 13 percent in Italian, 2 percent in Portuguese and 16 percent in Japanese.

However, these are the only programs at Adelphi that require a language, leaving some students to say the requirement is an unfair burden while others feel it adds to their educational experience. Regardless of their opinions about it, few students understand where the requirement came from and why it's limited to the BA, STEP, Honors and LGS programs.

For example, as a part of her degree, Benicia Lasko, a sophomore English major enrolled in the STEP and Honors programs, is required to demonstrate mastery of a foreign language through a Level IV proficiency. Lasko had to take the last three of four levels at Adelphi, adding 12 credits to her requirements from general education, STEP, Honors and the English program. And that feels like a lot of pressure, she said.

"I can say it definitely put me under a lot more stress [fulfilling the language requirement], simply because I didn't want to fall behind on my requirements to graduate, and I don't remember nearly as much as I would have liked to from the classes I completed," Lasko said.

She expressed what many students shared, questioning why some departments have the language requirement while others don't. According to the explanation on the general education page, "The language requirement is part of Adelphi's mission to prepare students to be informed and culturally sensitive citizens."

But students say that with a mission to educate culturally sensitive students, why don't all undergraduates across the university have to master a language to a certain proficiency? Bachelor of Fine Arts

Continued on page 2

Despite Available Spaces Parking Woes Return With the Spring Term

BY HUSSEIN ALI RIFATH

When freshman William Conboy drove to campus on a recent Thursday morning, he arrived to find the parking near the University Center full at 9 am. He spent an extra 12 minutes driving around campus to find an available spot and was forced to run to get to his first class on time.

For many, that's been a common experience this semester. Commuting to school is a reality for 80 percent of the undergraduate students at Adelphi, and they are increasingly finding parking on campus to be an uphill battle—despite the fact that according to Raymond Hughes, chief of Campus Safety & Emergency Management, there are plenty of spaces.

"All the commuters I know talk about the parking," said sophomore Leannan Harcourt-Brooke. Later in the day, parking near the classroom halls becomes particularly difficult. "Once you get to midday, there is definitely crowding," added Conboy.

Hughes said there are 4,831 students and 2,700 staff and faculty currently registered for parking decals "but these numbers are arbitrary due to the fact that everyone is not on campus at one time and two parking decals can be requested by each individual."

Even so, Hughes said not only have we not reached full capacity on campus since before Covid, there are enough spaces to go around. "With ample parking options always available, there is little to

no crowding," he said. "We monitor parking conditions and space availability daily and we have yet to reach full capacity."

According to Hughes, there are 2,796 spaces available on campus and 310 at the neighboring Garden City pool. Adelphi students have access to a total of 11 parking areas, two of which, the Hy Weinberg and Garden City pool, are a considerable walk away from the main campus. These areas contain most of the remaining parking spaces throughout the day.

"There are always between 100 and 200 spots available on the main campus and over 300 at the Garden City pool daily," Hughes said. "A slight reduction of spaces is due to the cor-

Continued on page 3

Psychology Research Opportunities with the Emerging Scholars Program

BY MALIKA BURIEVA

As the new school year commences, so do clubs, extracurricular activities and programs, many of which have research opportunities for students. Psychology students, however, would turn to the Emerging Scholars Program, a year-long research program for junior and senior psychology majors at Adelphi.

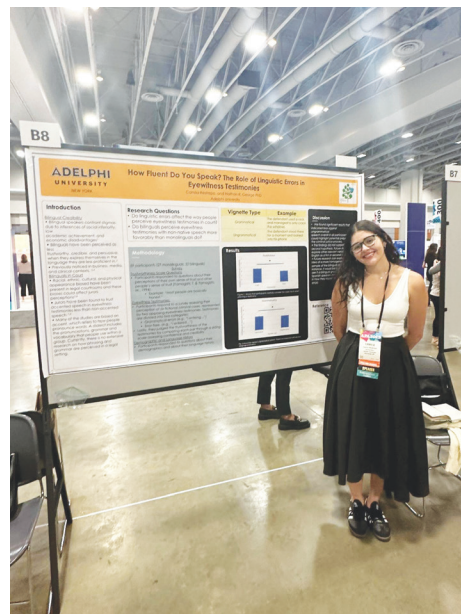
Emerging Scholars pursue authentic research and attend a monthly seminar with their peers in which significant topics are covered, such as ethics, data analysis, sampling, working with secondary data sets, the integration of science and psychological research and admissions to graduate school.

Luis Sebastian Garcia Campos, a senior and former Emerging Scholars member, shared his experiences. “While studying here at Adelphi, I developed a big research interest. I wanted to experience research. My favorite part about the program was presenting my findings on Research Day at Adelphi and the Association of Psychological Science in Washington, DC. I least enjoyed the process of waiting for data to be collected. Even though it is a relatively long process, once you have enough data, you can start the analysis and write.”

Shayne Georges, a current Emerging Scholars member with a minor in health education, said, “I wanted to take advantage of the opportunity to learn from a mentor that shares my interests. My experience has been a learning curve so far, and I'm very

satisfied with that. I truly enjoy gaining knowledge about how to conduct research, learning from my mentor, and meeting other Emerging Scholars.”

A minimum overall and psychology major GPA of 3.30 is required to be qualified. A successful completion of the Psychological Statistics (PIA 137)



Senior Camila Restrepo presented her project “How Fluent Do You Speak? The Role of Linguistic Errors in Eyewitness Testimonies” during the APA conference.

course is required. Students must also have completed or enrolled in Psychological Research (PIA 245). Once in the program, Emerging Scholars must meet regularly with their research advisor

and register for an independent study for one year (minimum of six credits).

Emerging Scholars receive support in project costs, attending professional conferences and other activities and materials related to their project and participation. Their research will be submitted to the Psi Chi Journal of Undergraduate Research and presented at the Adelphi Research Conference in the spring. If not, it will be submitted for presentation to a professional conference such as NCUR, APA, APS, EPA and NYSPA.

Anthony Gioletti, a senior and former Emerging Scholar, said, “I plan to go for a PhD in clinical psychology. I figured the program would help me discover whether I enjoyed research and provide some great experience for my resume. I loved the puzzle-solving and, at times, methodical work of research. It was fun to discover answers to problems I was interested in with the guidance of those more experienced.”

Senior Camila Restrepo and former Emerging Scholar said, “The Emerging Scholars program enriched my academic experience since I enjoyed answering questions and learning. I had the opportunity to explore the influence of language perceptions in a legal context. Simultaneously, we had assistance once a month from current grad students, who guided us and offered us feedback. From a constructive point of view, a united community can be created among the students who are part of the program.”

For interested psychology students, applications are due on March 10, 2024. 🐾

Student Poetry Corner

The Delphian *has introduced this poetry section so students may submit their original poems to be considered for publication. Submit poems up to 250 words to delphian@adelphi.edu and elizabethpanchyk@mail.adelphi.edu.*

“Befriend, my friend” is a revelatory ode to escape. It speaks of the infectious longing that plagues our days: to run far and deep into the woods, become someone else and never return. A common daydream for most with monotonous routines. In between the runs and the heavy breathing, the poem urges you to find your tree- a safe haven, within yourself. It asks you to reprimand the old wounds and the age-long grudges; seek beauty and color in a gray-scale world; and collect tokens of love from yourself and others. I hope reading it consoles you. I hope you can oversee the meaning and purpose of the antics of life, and accept days as they present themselves.

Befriend, my friend

Errah Fawad, freshman neuroscience major

Befriend, my friend
In the velveteen winds of September,
there is a desire to slip and fall under a tree-
laden with tender Honeycrisp apples,
laminated with maple lush leaves.
Here the air heaves lazily in vis-
cous waves of gold and green.
Here, we'll meet again.
By the bank, where the heavy seas haul
their release. Do you feel the breeze?
Rest your head under the cushioned weeds,
and caress your lips against the rip-
ened seeds. Come, let us befriend
this wandering life of ours.
Do you picture me in the rolling fields,
friend? Verdant and hazy, swimming
in the brazen-cut blades. In the val-
ley of ranges that never wakes,
under tapestries of quartz
skies that never settle.
Am I smiling in pink and white?
Does my skin blaze in the emanating light?
Your woes and mine- alike -will
fade with the twilight.

Now I blush like the sun,
drowsy and delirious.
A feverish dream of dry, dog days.
Am I affectionate like fat bees are
to pollen? Tumbling, stuttering with
my love for you. Wavering, hesitat-
ing my confession to you. Come, let us
befriend this wandering life of ours.
Like a soft creature of demure and grace,
rise to your place from the heap of earth.
Follow the gleaming stream to the glen,
past the dusky dryad in cotton and lace,
the binding lure of shivering branches
and soon, you'll reach the tree again.
In these woodlands, you are by yourself, dear
friend. Give in defeat and accept your fate.
Bow to the bushes and the beasts,
the lavenders and the oleanders.
Your solitude will soon be
replaced and you will dream.
Come, let us befriend this wan-
dering life of ours.

Matthew Curinga's Mission to Make Educational Technology Accessible

BY TAYE JOHNSON

As the fall semester unfolds, associate professor Matthew Curinga, EdD, who is in Adelphi's Ruth S. Ammon College of Education and Health Sciences, is working diligently alongside his fellow faculty members to study the emotional atmosphere of New York City school buildings. Curinga, along with his Adelphi colleague Elizabeth de Freitas, PhD, and a professor at Columbia University, in June was awarded a \$246,051 grant from the Spencer Foundation to study students' emotional experiences as they attend school in person.

The project is called “Mapping School Buildings Using Sensory Ethnographic Methods: A District-wide Study of School Architecture and Spatial Justice.” When students attend class in person, the environment can influence how they feel about their studies, receive information and socialize with their peers. The lighting, furniture, noise and space layout can determine students' emotional experiences.

Studies have shown that fluorescent lighting causes an unintended glare when the light shines off a surface. This process is called veiling

reflection, which affects how words are seen on paper or a smart board.

The project will bring an interdisciplinary approach to studying architecture, education and design to create research maps of the sensory dimensions of students' experiences. Over three years, Curinga will develop tools to capture data to track participants' senses. Four to six schools have partnered with him and the rest of the team for this project. Participating students will be a part of six to 10 workshops each year.

“I envision that Adelphi University will continue to invest in computer science and other disciplines to create opportunities for students to visualize how to apply their field of study,” said Curinga, who received his doctoral degree in education in instructional technology and media from Columbia University and has been an educator and programmer for over 10 years.

For Curinga, there are other things besides the mapping school building project on his to-do list. He is also a core faculty member at the Manhattan Institute for STEM and Imagination (MIXI). MIXI brings together a diverse group of researchers, artists, scientists, educators and creative practitioners. MIXI was

founded in 2020 and operates outside Adelphi University's Brooklyn location. Each academic year, MIXI hosts virtual and in-person meetup events, where attendees can learn about the NYC School Data Study Group, Rocket Switch Workshops and other events. These events are open to students and faculty.

The vision for MIXI was created from the idea that technology should enhance the public's interpretation of open-source tools and public software libraries. The motivation and vision behind the institute led to Columbia Center for Spatial Research partnering with MIXI to work on the grant-funded research project.

Curinga spends his time conducting research on the political and social implications of software development and design. The projects that he is working on have an overarching theme: to make software and education accessible.

In the upcoming semesters, Curinga said he would like to continue to work with other departments to offer different cross-collaborative coursework that can help bridge the gap between digital literacy, computer science and education. 🐾

The Delphian

August 28, 2023

The Voice of the Students

Volume 79, Issue 1

Students Will Take to the Performing Arts Center Stage This Fall

BY JOANNA REID

If you're looking for entertainment this fall, look no further than Adelphi's Performing Arts Center (PAC). The PAC was named one of the 35 Best University Performing Arts Centers in the United States by Clickiticket.com and now has a variety of exciting new shows lined up for this season, with discounted tickets available for Adelphi students, alumni, faculty and staff.

PAC executive director Blyth Daylong said that he's looking forward to bringing another exciting season of dance, music and theatre performances. "Our music students will be bringing the music of Broadway to the Westermann Stage of the Concert Hall. Our

present a variety of genres of music, including the world premiere of a piece written by faculty member Sidney Boquiren, a celebration of the music of Stephen Sondheim by a singer known for her beautiful interpretations of his music, and a special holiday celebration featuring several Broadway stars.

"Thanks to the generosity of Mary Jane and Thomas Poole, our Poole Family Broadway Series continues to bring some of the most talented Broadway performers right here to Garden City," Daylong said.

Adelphi will hold its annual Larson Legacy Concert with the 2022 Jonathan Larson grant recipient. This year's concert will feature playwright and composer, Christie Baugher. Baugher's work has been put on

is about the lives of F. Scott Fitzgerald and Zelda Fitzgerald and is set to a score reminiscent of 1920s jazz. A concert reading of the musical will be held at Adelphi on Sept. 9.

From Sept. 27-Oct. 1, Emily Lyon brings "A Taste of Shakespeare" to the PAC. Lyon is a seasoned director with experience directing multiple Shakespeare plays. She'll stage shortened versions of three different Shakespeare plays in only one hour including "The (Tiny) Tempest," "One Twelfth-Night" and "Midsummer: Tedious & Brief."

On Sept. 30 the PAC will host "The Princeton Singers: Inspirations" conducted by composer Steven Samtez. The choir has been making music for nearly 40 years and has performed various styles of music. According to their website, their show has been described as "a look at how living artists engage with works by masters of the past."

On Oct. 22, "Best of Broadway" returns. Adelphi's talented students, and a part of the Department of Music, will perform numbers from various Broadway and off-Broadway musicals. The show incorporates both classical and contemporary showtune from shows like "Funny Girl," "Wicked" and "In The Heights."

Next up in October will be Philip Edward Fisher: "The Romantic Piano" on the 27th. Fisher has performed at Adelphi in the past and he will be back playing songs from famous classical composers such as Chopin, Liszt and Rachmaninoff.

There are even more shows to look forward to in November, especially for theater fans. First up is "Mr. Burns, A Post-Electric Play." The dark-humored play is written by Anne Washburn and features music by Michael Freidman ("Bloody Bloody Andrew Jackson"). It centers around a group of survivors who recently shared an apoca-

lyptic event. In order to take their mind off things they try to act out a Simpsons episode from memory, which leads to bigger things. The play will run from Nov. 1-5.

Then there is no better day to see Tony Award nominee Melissa Errico sing some of Stephen Sondheim's brilliant discography than on a Sunday, in this case, Nov. 12. She'll be accompanied by music director Billy Stritch and a jazz trio.



Adelphi's Dance Department will showcase both ballet and modern dance in November.

Photo by Peter Frutkoff

As usual, students of Adelphi's Dance Department will showcase dance numbers in the style of ballet and modern dance. This will take place Nov. 15-19.

The season will finish with "A Slightly Wicked Holiday Show" on Dec. 17. The show will feature Alli Mauzey, who is currently starring in Broadway's "Kimberly Akimbo," Dee Roscioli, who was last seen on Broadway in "The Cher Show," and Sam Gravite who has recently played Fiyero in "Wicked." Together they will sing timeless holiday classics, as well as beloved Broadway hits.

For more information and a full list of shows and dates visit www.adelphi.edu/pac/ 🐾



Adelphi students were the stars of the Best of Broadway in fall 2022 and they'll take to the stage again in October. *Photo by Peter Frutkoff*

theatre students will be telling a tale of how an episode of "The Simpsons" becomes folklore in an apocalyptic future. And our dance students will be presenting a dance by acclaimed choreographer Doug Varone," he said.

In addition, Daylong said that world-renowned guest artists will take the stage to

in venues all over New York City and her musical entitled "The Fitzgeralds of St. Paul" was selected to take part in the 2020 Pacific Playwrights Festival. "The Fitzgeralds of St. Paul," to be directed by Danny Mefford ("Dear Evan Hansen," "Kimberly Akimbo" and "Bloody Bloody Andrew Jackson"),

New Laundry Fees Have Some Panther Residents in a Spin Cycle

BY MALIKA BURIEVA

The new school year began with an untidy load of confusion for residential students faced with a \$4 laundry fee. Earlier this month, Adelphi Residential Life announced via email that starting this semester a load of laundry will cost \$2 to wash and \$2 to dry in newly installed eco-friendly washers and dryers. Student complaints are bubbling to the surface.

Each semester, students will receive reloadable and preloaded \$50 Smart Cards. The machines accept the CleanPay Mobile App allowing students to add funds to their Smart Card, view machine availability, get alerts when the cycle is complete, and view tutorials for Smart Card machine usage.

"For about the last eight years, our

residence hall laundry machines were coin-less and free of charge," said Guy Seneque, director of the Office of Residential Life and Housing. "Adelphi's contract with our previous vendor had expired, and some of our machines were in need of replacement. Our returning residents may recall that we had some machines out of service last semester."

The sudden change highlights the issue of access for students on a budget. Seneque said, "Laundry needs are very individual, so it would depend on how frequently a student needs to do laundry. If they wash and dry one load a week over a 15-week semester, they would spend \$60 total, \$50 of which is funded by Adelphi. In addition, some weeks are shortened due to holidays like Thanksgiving. The \$50 credit covers 12.5 wash/dry cycles over the 15-week semester."

Alternatives like home laundry or local pickup and delivery services are encouraged.

Even so, junior computer science major and Waldo Hall resident Chris Sciortino, said, "I live here on campus, but my home is about an hour away. After hearing about the prices for washing and drying laundry, I decided it was best for me to head home when I have time and do laundry there. As college students, we're all on a budget and this expense seems to be a hefty one that some students have no choice but to pay for. It feels wrong."

Earle Hall resident and junior psychology major Alexandra Campbell initiated a petition on change.org titled, "Make Laundry Free for All Resident Students at Adelphi University."

"Adding a price to do laundry, which

was previously free, is a shock," Campbell said. "However, for it to be \$4 to do a complete load is absurd. It is not the fault of the residents that the machines were already half broken when we entered the building, but it is the responsibility of the university to do routine maintenance on them to make sure they work."

In response to learning about the petition, Seneque said, "Adelphi supports our students who choose to peacefully make their voices heard."

It's important to note that the Panther Pantry offers vital resources like food and toiletries for financially challenged students. Additionally, the Adelphi Student Emergency Fund assists enrolled students facing immediate financial hardships due to emergencies. 🐾

Student Debt and President Biden's Plan

BY MALIKA BURIEVA

The struggles of being a college student involve the payment of expensive tuition bills that many students can't afford. This is a direct cause of student debt when they take out loans. This problem has affected students of all colleges, including community and state colleges, public and private universities. Higher education is becoming too expensive for the average student. According to Experian, as of June 2022, the average American is \$39,381 deep in student loan debt. Even former college students who have long since graduated, on the path of obtaining jobs, promotions or higher positions, are



Kristen Capezza, Adelphi's vice president of enrollment management and university communications Photo from Adelphi website

still paying off their student loans. These include graduates who have chosen an entirely different path from what they majored or minored in.

On August 24, President Joe Biden and Vice President Kamala Harris announced the Biden-Harris Administration's Student Debt Relief Plan, in partnership with the U.S. Department of Education. The plan proposes \$10,000 of student loan forgiveness for federal student loan borrowers and \$20,000 for those who received a Pell Grant for college. To be eligible, single borrowers must meet income levels of under \$125,000, while married couples must meet an income of under \$250,000.

Some students nationally have deemed this plan as unfair due to the

“President Biden's legislation to reduce debt for millions of borrowers was groundbreaking and timely, especially given the pandemic-related financial stress facing so many of our students and families,” said Kristen Capezza.

income data being too high to be considered for relief, but others welcome it. At Adelphi, the administration and students both had responses to the creation of the debt-relief program.

“President Biden's legislation to reduce debt for millions of borrowers was groundbreaking and timely, especially given the pandemic-related financial stress facing so many of our students and families,” said Kristen Capezza, vice president of enrollment management and university communications. “We hope it will help many of today's graduates be able to more confidently pursue their goals of graduate and continuing education. However, this one-time measure does not address affordability and financial literacy in a sustainable ongoing fashion. For this reason, Adelphi remains committed to educating our students and families every year about responsible borrowing and maximizing return on investment.”

The Delphian reached out to students as well.

Iyana Baskerville, a senior English literature major in STEP for Adolescent Education, said, “I do have loans out so I definitely benefit from Biden's loan forgiveness. I can't speak for others but for me it will cover a significant amount of my debt, even if it's not all of it. I definitely think more needs to be done but for right now it's a step in the right direction.”

“I think that it's a really good idea, especially for me. My mom and I are paying for my schooling,” said Mariyam Majid, junior nursing major. “It's really hard, especially for middle-class families who work hard to pay for school. I think it's like a little weight off of your shoulders. If Biden actually goes with this plan and sticks with it, then it'll be of good help.”

Nicole Cecere, a junior who has a communications concentration in public relations and journalism, said, “It's relieving to me because I wanted to go to community college for the first two years and then I wanted to transfer to a private school just to save money. I always wanted to go to Adelphi. So, it makes me feel good about my decision because I'm going to get this money back. I didn't have to sacrifice two years of my Adelphi experience just for money.”

For Jessie Mosley, a junior communications major focused on media studies and a minor in human resources, the fact that the plan will reduce her loans by the time she graduates in 2024 is appealing. “This reduced loan will most likely help me purchase a home earlier than before. I think it is an amazing plan that I hope will help many students.”

The relief is given through the outstanding debt that the borrower has. For instance, if the borrower is eligible for debt relief of \$20,000 yet has a remaining balance of \$15,000, only \$15,000 will be given in relief. When receiving relief, some borrowers are not required to file anything. This is due to the fact that nearly 8 million borrowers may be eligible to receive relief automatically through income data having been filed and available in the system by the U.S. Department of Education.

If not, the Administration plans to release an application that is expected to be available in early October. After one

Continued on page 5

ADELPHI
UNIVERSITY
Performing Arts Center

PERFORMING ARTS CENTER UPCOMING EVENTS / FALL 2022

FREE STUDENT RUSH TICKETS

One hour before all performances, including guest artists, full-time Adelphi students are eligible to get a Rush ticket for free. Arrive prior to the performance with your Adelphi ID, get in the Rush line and receive one remaining unsold ticket. Subject to availability, not available for every performance. Cannot be reserved in advance. Rush tickets will stop being distributed 10 minutes before the start of the show, so get your tickets early.

This Is Our Youth

by Kenneth Lonergan

Wednesday, September 28 • 6:30 p.m. (artist talkback)

Thursday, September 29 • 7:30 p.m.

Friday, September 30 • 7:30 p.m.

Saturday, October 1 • 2:00 p.m. and 7:30 p.m.

Sunday, October 2 • 2:00 p.m.

Black Box Theatre

In meticulous, hilarious and agonizing detail, *This Is Our Youth* follows 48 hours of three very lost young souls in the big city at the dawn of the Reagan era: Warren Straub, a dejected 19-year-old who steals \$15,000 from his abusive lingerie-tycoon father; Dennis Ziegler, the charismatic domineering drug-dealing friend who helps him put the money to good use; and Jessica Goldman, the anxiously insightful young woman Warren yearns for.

Nobuntu

Wednesday, October 12 • 7:30 p.m.

Westermann Stage, Concert Hall

This female a cappella quintet from Zimbabwe has drawn international acclaim for its inventive performances that range from traditional Zimbabwean songs to Afro jazz to gospel. Nobuntu's concerts are performed with pure voices, augmented by minimalistic percussion, traditional instruments such as the mbira (thumb piano) and organic, authentic dance movements.

Anthony Rapp: *Without You*

Sunday, October 16 • 2:00 p.m.

Adelphi Students: \$15/\$10

Westermann Stage, Concert Hall

Anthony Rapp's *New York Times* bestselling memoir becomes a stunning one-man show about grief, hope and triumph. Backed by his band, Rapp movingly intertwines two stories: his experience as part of the original production of *RENT* and the shared grief when its composer (and 1982 Adelphi alum) Jonathan Larson died suddenly—and his beautiful relationship with his mother, who was battling cancer during this turbulent time.



**Reserve Your
Tickets Today!**

**ALL ADELPHI STUDENT TICKETS
ARE \$7 UNLESS OTHERWISE NOTED.**
(Discounts available for students,
Adelphi alumni and employees.)

PAC.ADELPHI.EDU
516.877.4000 | GARDEN CITY, NY

The Americans with Disabilities Act (ADA) and Adelphi University require that all events be accessible. To request a reasonable accommodation, please contact the event host identified on the event webpage; please allow for a reasonable time frame. The event host, when necessary, will collaborate with the Student Access Office.

